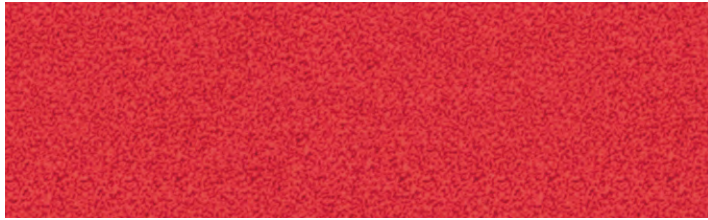


## Designer Colors\*



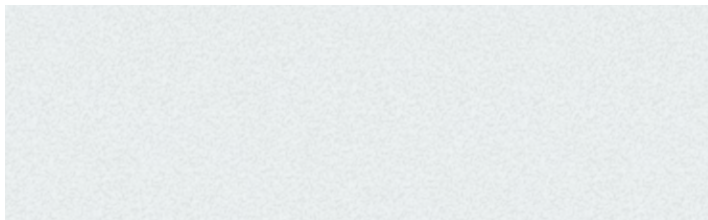
Warm Red



Black



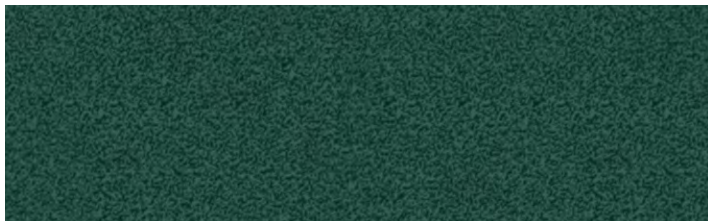
Gray Granite



White Granite



Navy Blue



Hunter Green

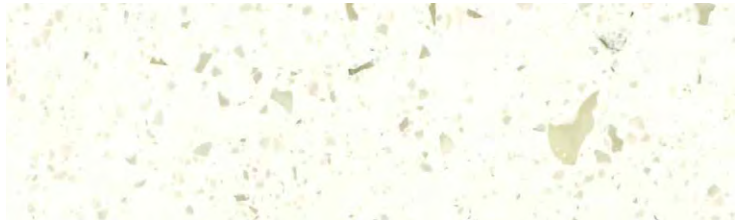


Antique Copper

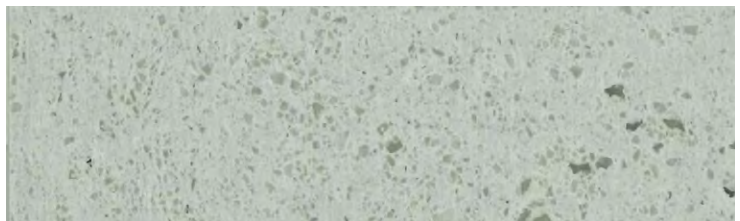
## Solid Surfaces



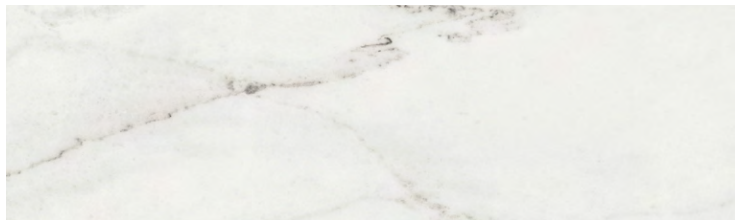
Ice



Birch



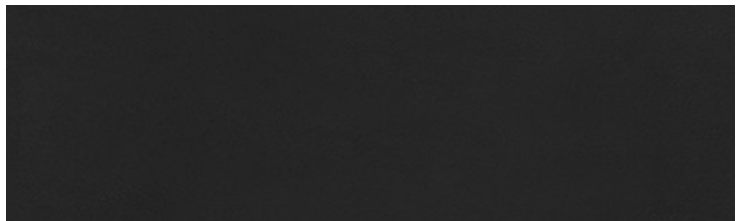
Ash



Rem•



Soke•



Domoos



P.O. Box 340500 Milwaukee, WI 53234-0500 U.S.A.  
(414) 671-6350 • [www.hatcocorp.com](http://www.hatcocorp.com) • [support@hatcocorp.com](mailto:support@hatcocorp.com)

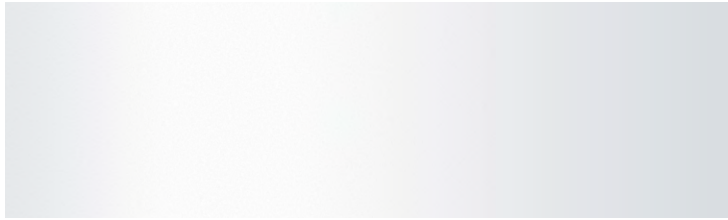
*Colors are a representation and may not exactly match our colors.*

\* See our website for information on antimicrobial paint: [www.hatcocorp.com/antimicrobial-paint](http://www.hatcocorp.com/antimicrobial-paint)

• Due to the natural texture, patterns will vary.

## Gloss Finishes\*

# Paint Chip and Solid Surface Samples

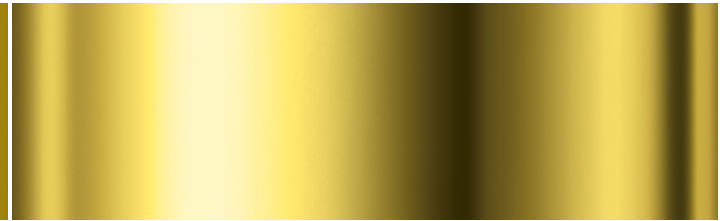


Smooth White

## Plated Finishes



Gleaming Gold



Bright Brass



Glossy Gray



Bright Nickel



Bold Black



Bright Copper



Radiant Red



Antique Nickel



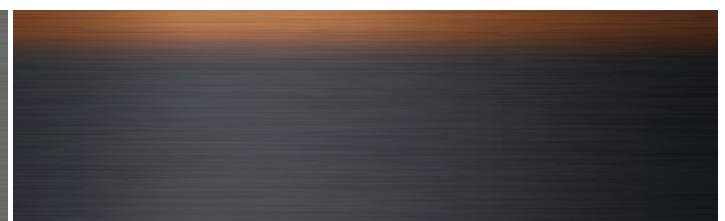
Brilliant Blue



Antique Brass



Clear Brushed Metal Finish



Antique Bronze

\* See our website for information on antimicrobial paint: [www.hatcocorp.com/antimicrobial-paint](http://www.hatcocorp.com/antimicrobial-paint)